







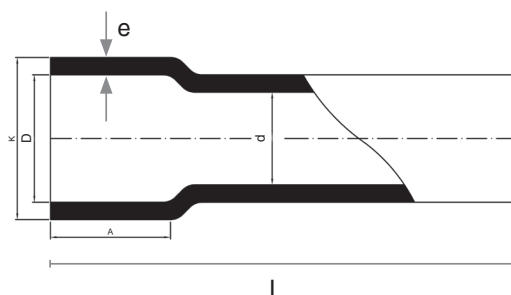
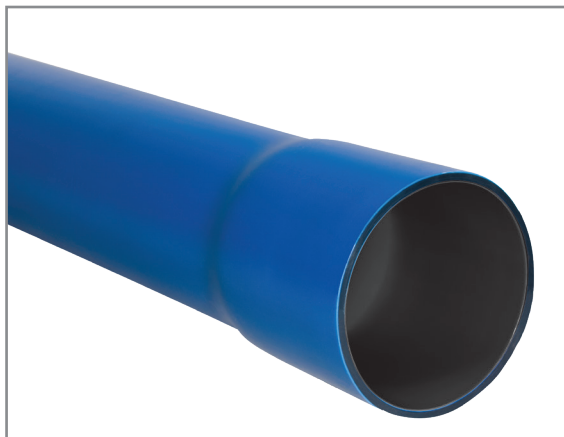


Protective rigid pipe with a socket - ROS-M (RHDPE)

	Reference documents:	PN-EN 61386
	Characteristics:	Smooth rigid pipe with a socket
	Application:	Protection of cables in open trenches. Protection of cables in open trenches. Suitable for culvert and drilling up to 12 m.
	Material:	HDPE
	Compression strength:	750N
	Scope of temperatures: (transport, installation, exploitation)	-25°C ÷ 90°C
	Colour:	External: red or blue Internal: black
	Ø external [mm]:	50; 75; 110; 160
	Length of bars [m]:	6
	NOTES:	<ul style="list-style-type: none"> • Possibility of producing a pipe in a different colour on request • Possibility of producing a pipe with other mechanical properties • Possibility of producing a UV resistant pipe • Possibility of producing a flame-retardant pipe



Symbol	Ø D [mm]	e [mm]	L [m]	Compressive strength	Colour		item/pack
					blue index	red index	
ROS-M 50/3,5	50	3,5	6	750N	10671	10670*	220
ROS-M 75/4,5	75	4,5	6	750N	10673	10672*	120
ROS-M 110/5,5	110	5,5	6	750N	10675	10674	50
ROS-M 160/8	160	8	6	750N	10677	10676	35